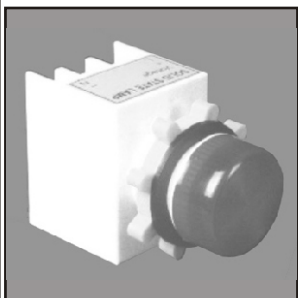
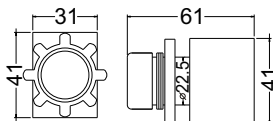


MIMIC 22.5 Cutout square body **Standard** lamp

MIMIC



∅ 22.5mm Cutout



Available voltage:
 6,12,24,48,110,240,415 VAC
 6,12,24,48,110,220 VDC
 6,12,24,48,110,220 VAC/DC

Rugged design
 Proven performance

0.5 Watt

Also available Green steady Red Flasher or vice versa or any combination with any two colour.

Adjustable time 0 to 180 sec.

180 viewing angle

Code

L/STD 22	Red, Green, Amber
L/STD 22	White, Blue
BIL/STD 22	Bicolour lamp Red, Green, Amber
TRL/STD 22	Tricolour lamp Red, Green, Amber
FL/STD 22	Flasher lamp Red, Green, Amber
RL/STD 22	Relay lamp with single change over contact
RL/STD 22	Relay lamp with double change over contact
← S+FL/STD 22	Steady + Flasher lamp Red, Green, Amber
TL/STD 22	Timer lamp with single change over contact
← TL/STD 22	Timer lamp with double change over contact
OCL/STD 22	Open collector lamp with single output transistor
OCL/STD 22	Open collector lamp with double output transistor

TRUTH TABLE FOR "AND LAMP"

INPUT - 1	INPUT - 2	INDICATION	RELAY
✓	x	x	Denergised
x	✓	x	Denergised
✓	✓	✓	Energised

← LOL/STD 22 **Logic 'AND' lamp** with single change over contact
 LOL/STD 22 **Logic 'AND' lamp** with double change over contact

TRUTH TABLE FOR "OR LAMP"

INPUT - 1	INPUT - 2	INDICATION	RELAY
✓	x	✓	Energised
x	✓	✓	Energised
✓	✓	✓	Energised

← LOL/STD 22 **Logic 'OR' lamp** with single change over contact
 LOL/STD 22 **Logic 'OR' lamp** with double change over contact

For 110 VDC, 220 VDC
 For 415 VAC
 Lamp with fire retardant body