

Basic Range



BF1-O- Overfrequency Relay

Application

Overfrequency supervision of 1 or 3 phase systems.

Function

The unit **BF1-O** is equipped with an overfrequency supervision ($f>$) with adjustable pick-up values and trip delays. The measured frequency is continuously compared with the set reference values.

For frequency supervision the cycle duration is evaluated and so measuring is virtually independent on harmonics. To avoid tripping, during normal operation due to interference voltages, a fixed measuring repetition is used.

Technical data

| | |
|--------------------------------|-----------------------------------|
| Rated voltage U_n | : 110 V, 230 V, 400 V AC |
| frequency range at | |
| 50 Hz rated frequency | : 50 - 54 Hz |
| 60 Hz rated frequency | : 60 - 64.8 Hz |
| Tolerance | : ± 1 % of of rated frequency |
| Hysteresis | : 0.5 % of of rated frequency |
| power consumption | : 3.7 VA |
| Thermal load carrying capacity | : continuously 1.3 x U_n |
| Returning time | : 250 ms |
| Minimum operating time | : 250 ms |

Output relay

| | |
|---------------------------------|-----------------------|
| Maximum breaking capacity ohmic | : 1250 VA AC/120 W DC |
| Inductive | : 500 VA AC/75 W DC |
| Rated current | : 5 A |
| Making current | : 20 A |

System data

| | |
|--|---------------------|
| Regulations | : VDE 0435 part 303 |
| Temperature range at storage and operation | : -25°C to +70°C |

Mechanical stress

| | |
|---------------------------------|------------------------------------|
| Shock | : class 1 acc. to DIN IEC 255-21-2 |
| Vibration | : class 1 acc. to DIN IEC 255-21-1 |
| Degree of protection unit front | : IP 40 at closed front cover |
| Weight | : approx. 0.5 kg |
| Mounting position | : any |

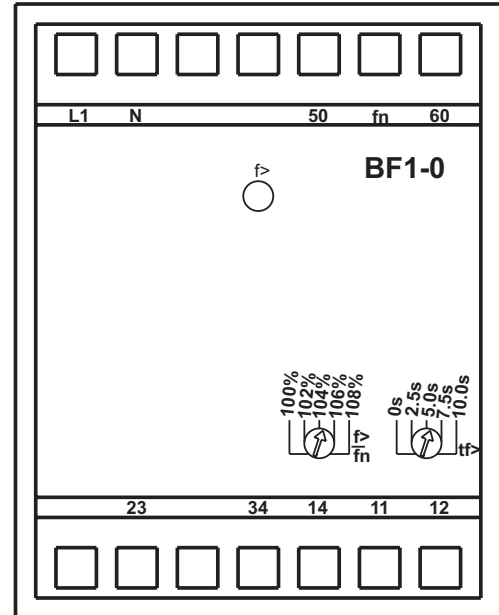


Fig. 1 : Front plate

The unit **BF1-O** is designed to be fastened onto a DIN rail acc. to DIN EN 50022 same as all units of the BASIC RANGE.

The front plate of the unit is protected with a sealable transparent cover (IP40).

Please remove the transparent cover at the appropriate openings with a screw drive to adjust the relay.

LEDs

LED $f>$ indicates pick-up of the relay by flashing.

LED $f>$ indicates tripping at overfrequency (steady light)

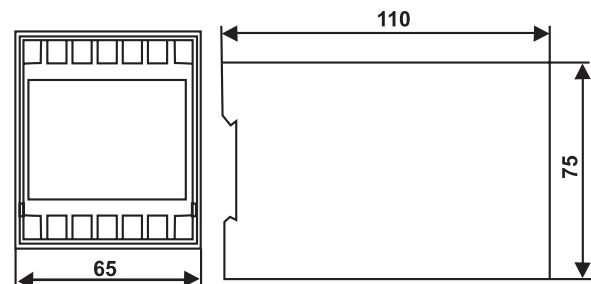
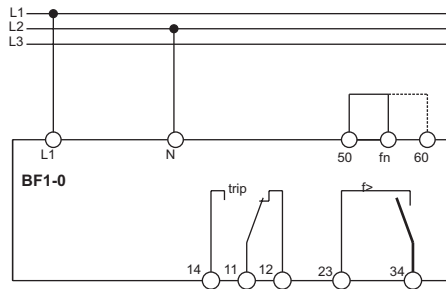


Fig. 2 : Dimensional drawing BF1-O

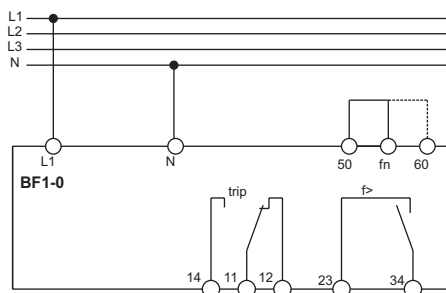
Auxiliary voltage supply

Unit **BF1-O** needs no separate auxiliary voltage supply. The supply voltage can be formed directly from the measuring quantity.

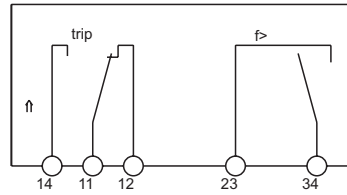
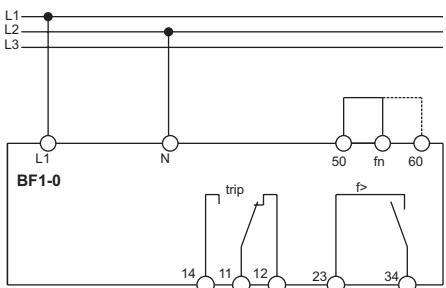
A) 3 wire system 110 V



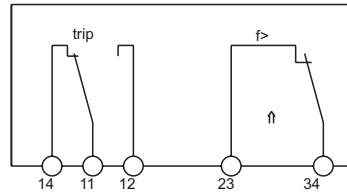
B) 4 wire system 230 V



C) 3 wire system 400 V



Operation without a fault



Overfrequency

Fig. 4: Contact positions

Connecting terminals

The connection up to a maximum of $2 \times 2.5 \text{ mm}^2$ cross-section conductors is possible. For this procedure the transparent cover of the unit has to be removed.

Setting ranges

f> : 100 - 108 % fn
tf> : 0 - 10 s

Order key

| BF1-O | |
|----------|-----|
| 110 V AC | 110 |
| 230 V AC | 230 |
| 400 V AC | 400 |

Fig. 3. Connection diagram

| System | Relay type | Connection diagram |
|----------------------|------------|--------------------|
| 3 Phase 110 V | BF1-O-110 | A |
| 3 Phase 230 V with N | BF1-O-230 | B |
| 3 Phase 400 V | BF1-O-400 | C |

For further information, please contact :



C&S Protection & Control Ltd.

44, Okhla Indl. Estate, New Delhi-110020, Ph.: 011-55602414, 26319465-66 Fax: 011-55602413 email: cspc@controlsindia.com

Marketing Office : DELHI : Ph.: 55602414, 26319465-66 Fax: 55602413 **CHANDIGARH** : Ph. 2776154, 2776151, 2726153 Fax: 2726154
KOLKATA : Ph. 24549607-08 Fax: 24549371 **MUMBAI** : Ph.: 24114727-28 Fax : 24126631 **PUNE** : Ph.: 5444822-824, Fax: 5410820,
AHMEDABAD : Ph.: 65841425, 6589132 Fax : 6589132 **BANGALORE** : Ph.: 5586147, 5323582, 5594939 Fax: 5582796,
CHENNAI : Ph.: 26426475, 26426572 Fax: 26411972 **HYDERABAD** : Ph.: 27813003, 55332304 Fax: 27812987